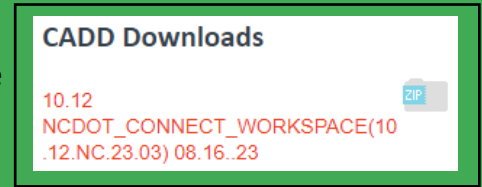




NCDOT ORD CONNECT WORKSPACE INSTALLATION & CONFIGURATION

This procedure is used to download and install the NCDOT ORD CONNECT Workspace and configure it for Worksets not located in Projectwise.

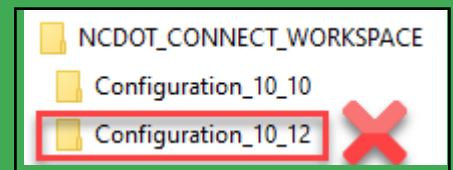
1. **Download** the workspace ZIP file from the CADD Services Website
<https://connect.ncdot.gov/resources/CADD/Pages/default.aspx>



2. **Delete** from your computer:

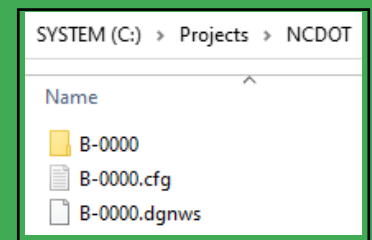
a. Old 10.12 Workspace: (If present)

C:\NCDOT_CONNECT_WORKSPACE\Configuration_10_12



b. Old Example Project: (If present)

C:\Projects\NCDOT\B-0000 and associated CFG's & DGNWS's



c. Old Desktop Icon: (If present)

10.12.XX.X



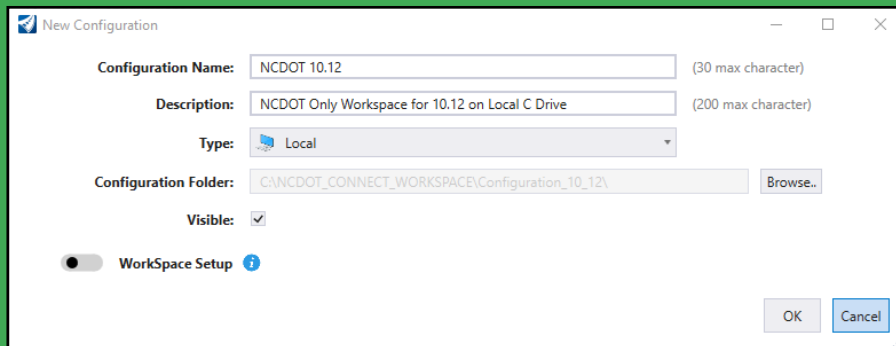
3. **Extract** ZIP to C:\

4. **Copy** new Desk icon to the Desktop from this location:

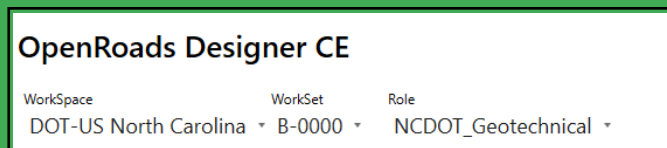
C:\NCDOT_CONNECT_WORKSPACE\Configuration_10_12\WorkSpaces\DOT-US North Carolina\Desk

5. **Launch** the 10.12.XX.X desktop icon.

6. **Create** Workspace Configuration: Use the Workspace Configuration Manager **Manage Configuration** to Name, Describe, and Path to the location of your workspace *Configuration* folder. (This may vary among disciplines and firms. The Local Configuration used by Geotech is shown below.)



7. **Select** your Workspace, WorkSet (example workset B-0000 is provided ~ you may need to create one), and Role



8. **Open** your file. (Or create a new file if necessary. 'Recently Opened' files will be shown as well.)